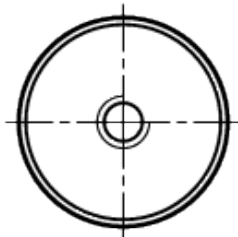
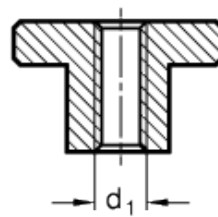
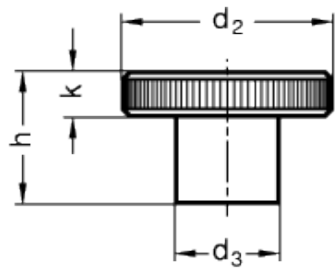


# DIN 466

Knurled grip knobs



technical informations

**Material**

Turned black-oxide steel.

**Assembly**

Hub, tapped through hole.

Standard Elements	Main dimensions				Mounting hole	Weight
Description	d <sub>2</sub>	h	d <sub>3</sub>	k	d <sub>1</sub>	g
DIN 466-M3	12	7.5	6	2.5	M3	3
DIN 466-M4	16	9.5	8	3.5	M4	7

DIN 466-M5	20	11.5	10	4	M5	13
DIN 466-M6	24	15	12	5	M6	23
DIN 466-M8	30	18	16	6	M8	44
DIN 466-M10	36	23	20	8	M10	87
DIN 466-M12	40	25	22	10	M12	118

---



ELESA and GANTER models all rights reserved in accordance with the law. Always mention the source when reproducing our drawings.

**STANDARD MACHINE ELEMENTS WORLDWIDE**